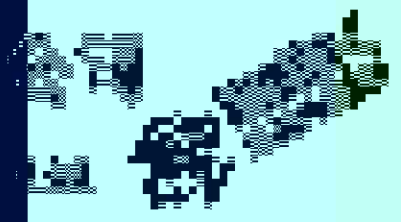
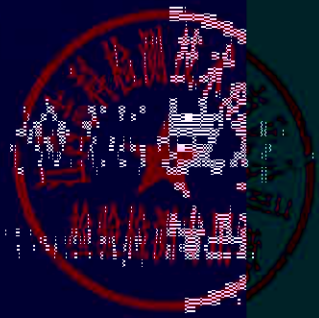
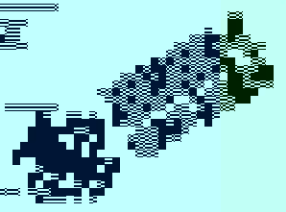
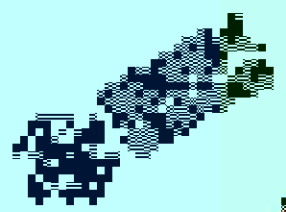
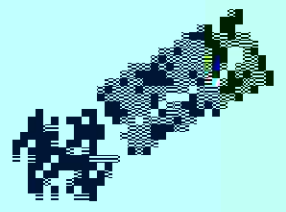
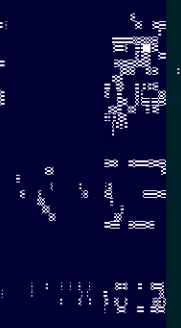
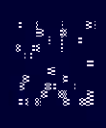


委托
项目
检测

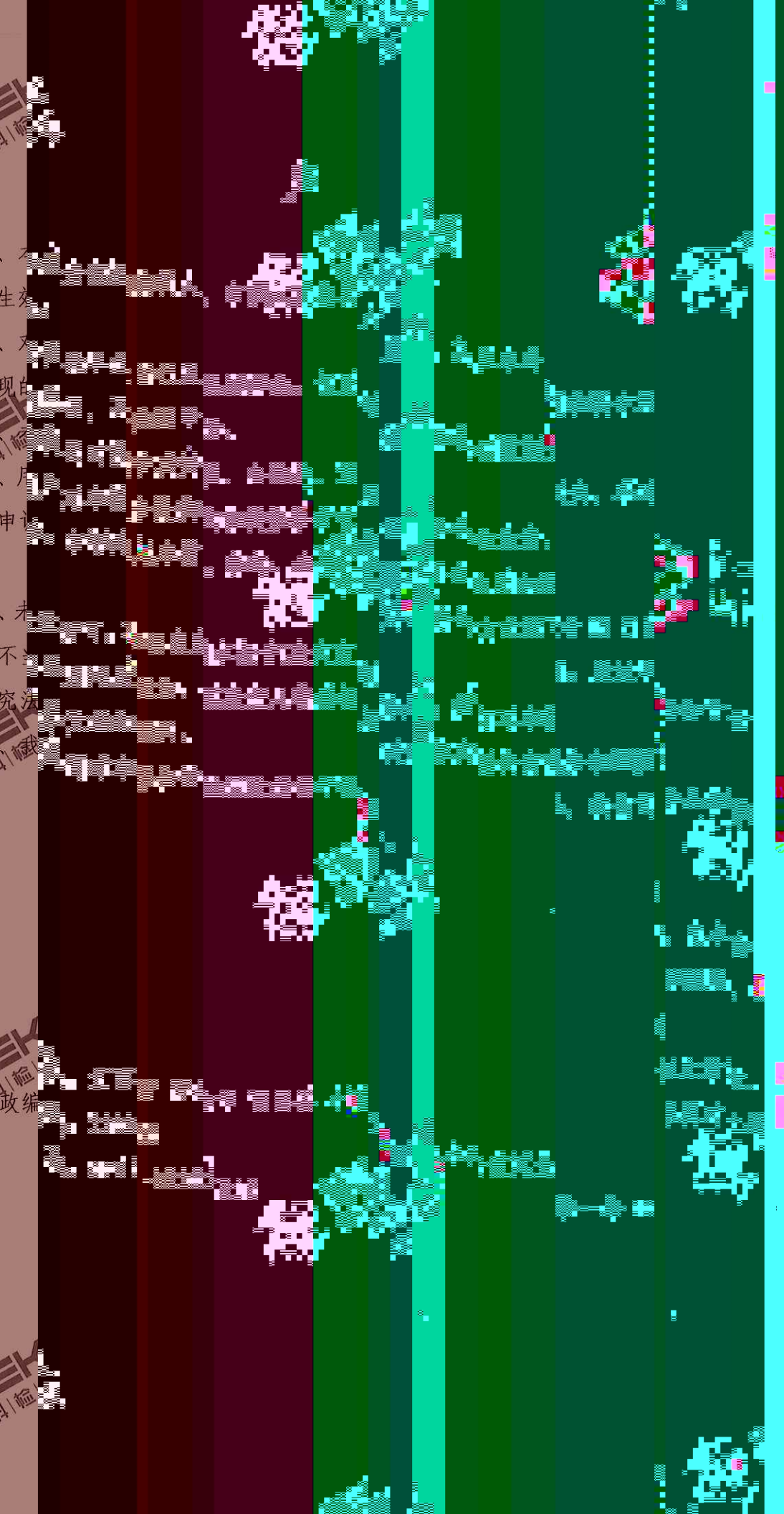


一、
后方可
二、
无法复

四、
部提出
理。

五、
变更及
行为追

地
政编
电





委
项
取

样



采

检

检



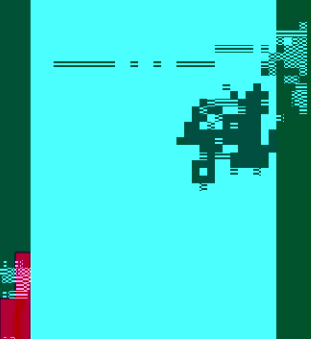
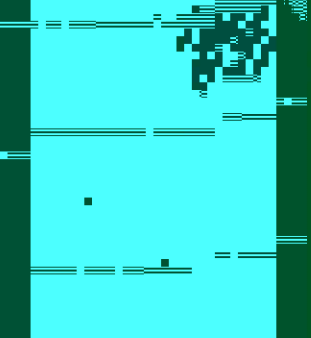
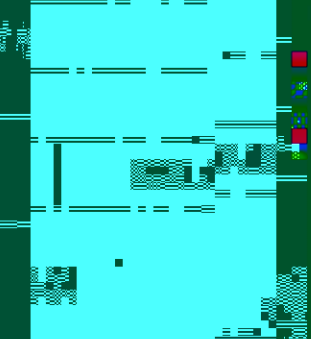
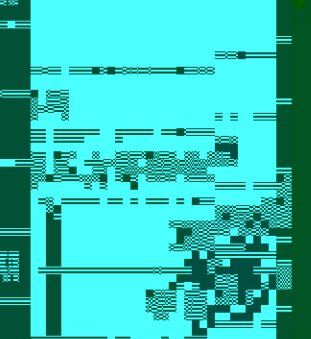
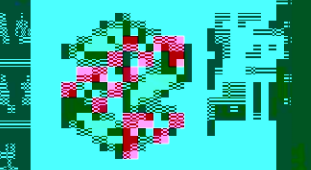
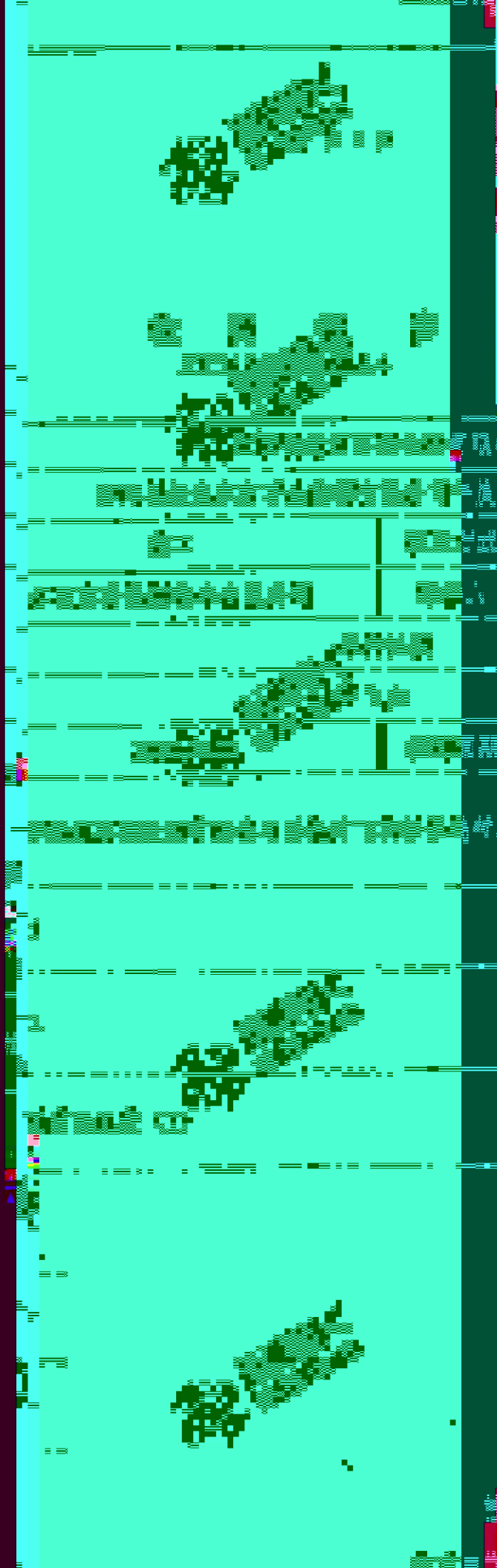
检

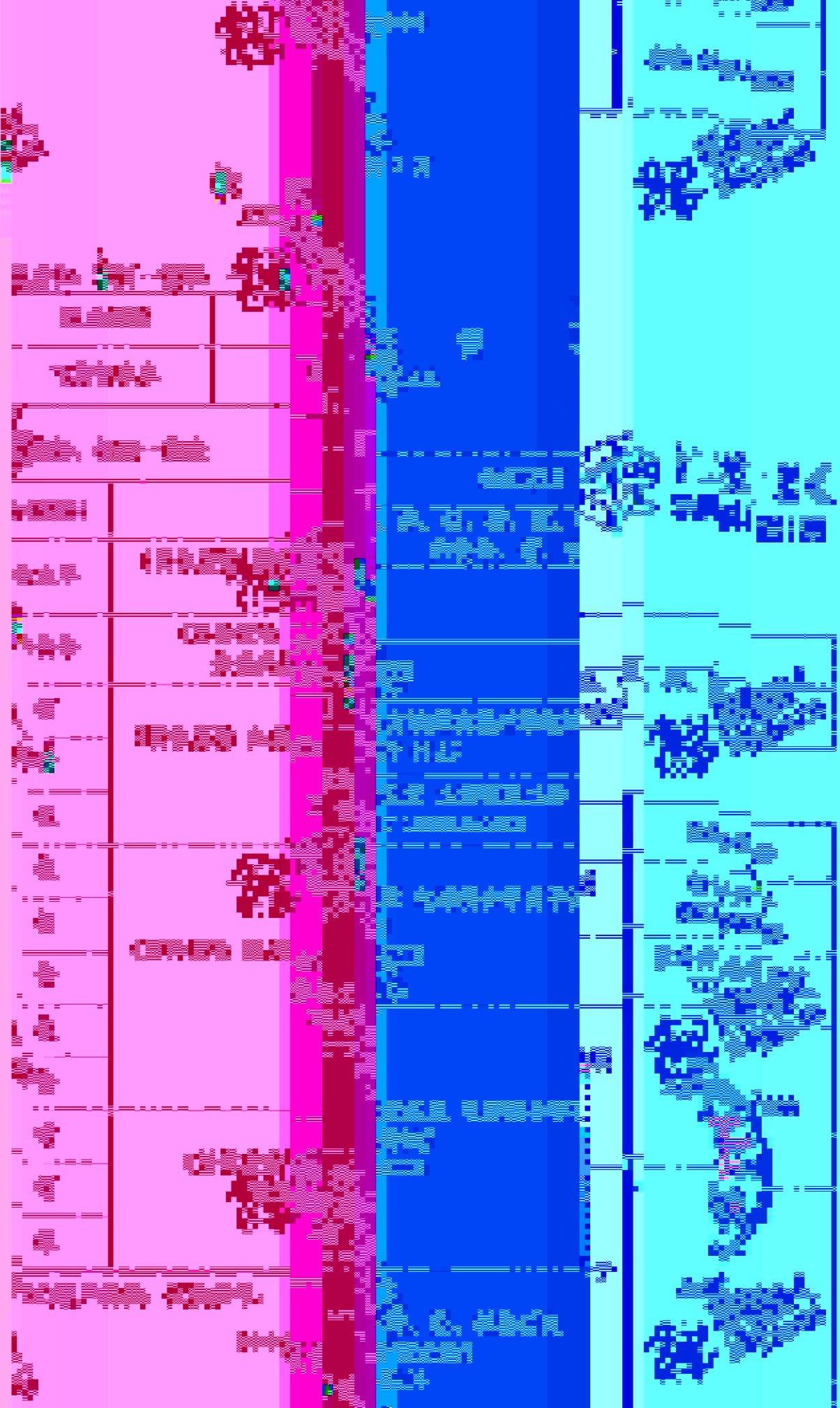
检

编



登





Technical drawing of a mechanical assembly, showing a shaft and a hub. The drawing includes a cross-section of the shaft and hub, a side view of the shaft, and a side view of the hub. The shaft is labeled with 'A', 'B', 'C', 'D', 'E', 'F', 'G', 'H', 'I', 'J', 'K', 'L', 'M', 'N', 'O', 'P', 'Q', 'R', 'S', 'T', 'U', 'V', 'W', 'X', 'Y', 'Z'. The hub is labeled with '1', '2', '3', '4', '5', '6', '7', '8', '9', '10', '11', '12', '13', '14', '15', '16', '17', '18', '19', '20', '21', '22', '23', '24', '25', '26', '27', '28', '29', '30', '31', '32', '33', '34', '35', '36', '37', '38', '39', '40', '41', '42', '43', '44', '45', '46', '47', '48', '49', '50'. The drawing is a technical drawing of a mechanical assembly, likely a shaft-hub connection. The drawing shows a shaft with a central hole and a hub with a corresponding hole. The shaft is labeled with 'A', 'B', 'C', 'D', 'E', 'F', 'G', 'H', 'I', 'J', 'K', 'L', 'M', 'N', 'O', 'P', 'Q', 'R', 'S', 'T', 'U', 'V', 'W', 'X', 'Y', 'Z'. The hub is labeled with '1', '2', '3', '4', '5', '6', '7', '8', '9', '10', '11', '12', '13', '14', '15', '16', '17', '18', '19', '20', '21', '22', '23', '24', '25', '26', '27', '28', '29', '30', '31', '32', '33', '34', '35', '36', '37', '38', '39', '40', '41', '42', '43', '44', '45', '46', '47', '48', '49', '50'. The drawing includes a cross-section of the shaft and hub, a side view of the shaft, and a side view of the hub. The shaft is shown with a central hole and a keyway. The hub is shown with a central hole and a keyway.